

Portrait of a Coral Reef

Underwater Landscapes

From the Hotspots of Marine Biodiversity



Coral Reef Series

Jim Hellemn

Jim Hellemn

www.jimhellemn.com



One-of-a-kind Coral Reef Landscapes

Underwater photographer and digital imaging specialist Jim Hellemn creates images of extreme proportion, using specialized lighting and multiple images to capture incredible underwater landscape images of coral reefs and ocean environments. A recent project, a 2,400 mega pixel image of a California Giant Kelp Forest, has been reproduced at life size in glass panels at the front of the Aquarium of the Pacific in Long Beach, California. The photograph itself is extremely unique – underwater photographs are extremely limited in resolution and coverage without the techniques which Hellemn uses. “When you back up to take a wide shot, everything turns blue and fuzzy because water absorbs all the red and yellow light and obscures details”, Jim explains. To solve the problem, Jim developed his own equipment and methodology. He developed his own techniques, using computers to stitch multiple images together to create seamless panoramas and created the first “gigapixel” image in 1999. As a result, Jim’s images can contain more than 500 times more pixels than a typical photograph and are able to capture the vivid colors and details across a wide field. The aquarium project represents another important aspect of Hellemn’s work; public awareness and ocean conservation. Jim’s images offer a unique way to appreciate a part of our environment that very few people get to experience. If people can make the connection with the ocean as an important part of their own environment, Hellemn hopes they will instinctively want to protect it



Jim Hellemn has been creating high resolution ocean images since 1999, when he completed his first gigapixel image of a coral reef wall in the Cayman Islands. The 1.7 gigapixel photograph of Bloody Bay Wall (“Portrait of a Coral Reef”, National Geographic Magazine Oct 2001) was the first “stitched” image ever created and, at the time, was the highest resolution digital image ever produced. Hellemn also created one of the first “stitched” images, before digital cameras and stitching software existed. Working from film, he developed a methodology for seamlessly blending images together with a high degree of accuracy. His images are still created this way, with each frame corrected and manually stitched together in a process that cannot be rushed or automated. Some images take weeks, or even months to produce. In 2006, Jim was commissioned to produce a coral reef image large enough to cover the side of a building in Grand Cayman. The resulting image was rendered in tiny, hand-cut Italian glass tiles, and now covers an inside wall of the Camana Bay Observation Tower, where visitors can walk up a coral reef on their way to the observation deck. His painstakingly stitched pictures also give scientists a valuable yardstick for making ecological comparisons. In 2010, he returned to Bloody Bay Wall to create a matching image of the site a decade later, working with a team of researchers studying the changes in the reef over time. Another project at the same site investigates coral fluorescence. The project results are displayed in a traveling exhibit called “Creatures of Light”, currently at the Field Museum in Chicago. Jim has produced many other images around the world. His current work focuses on creating underwater landscapes in all of the “hotspots” of marine biodiversity around the world, identified by researchers and rated by biodiversity and endangerment.

ARCHITECTURAL INSTALLATIONS / PUBLIC ATTRACTIONS

“Coral Anchors” Cayman Brac, Cayman Islands Opened January 2016

Shoes are optional at this attraction - a 30 foot wide semi-outdoor fine art print installation in paradise at the Cayman Brac Beach Resort. “Coral Anchors” is a two gigapixel image of a pristine coral reef wall in Cayman Brac, commissioned by the resort. Over a year was spent planning and executing the production of the image.

Camana Bay Observation Tower Grand Cayman, Cayman Islands Opened October 2009

In 2006, Jim Hellemn was commissioned to create a high resolution coral reef image for the Camana Bay Observation Tower, a five story public attraction in Grand Cayman, where visitors can now “walk” up a coral reef. The concept was to create a photorealistic image of a typical Cayman reef wall depicting the abundance of marine life commonly found there. As a way to involve all of the islands and avoid spotlighting one site over another, the image for the tower was created from over a hundred individual images captured at pristine sites on all three islands and blended into one spectacular scene. The final image on the tower is 25 feet wide and over 70 feet high. From a distance it appears to be a photograph, but up close a completely new level of artistry is revealed - the image is rendered in millions of hand-cut Italian glass tiles in fine detail. It took several months to create the composite image and over two years for the tile production and installation.

Aquarium of the Pacific Long Beach, California Opened April 2013

Commissioned to create a life size photograph of a California Kelp Forest, Jim was faced with a huge new challenge. As a result of this work, a new extension at the front of the Aquarium of the Pacific features a 2.6 gigapixel image of a kelp forest embedded in the glass windows that line 130 ft structure. Illuminated at night, the image is viewable from the inside and outside of the building, giving visitors the impression they are looking into an underwater Kelp Forest.

“Creatures of Light” Exhibit American Museum of Natural History, NY Opened March 2012

In a third project at Bloody Bay Wall, funded by the National Science Foundation, Jim created a third high resolution image of Bloody Bay Wall, this time working with scientists to capture coral fluorescence at night. The “Creatures of Light” exhibit opened at the American Museum of Natural History March 2012 in New York and has been featured at the Field Museum in Chicago and the Fernbank Natural History Museum in Atlanta. The exhibit will travel to other venues around the world through 2022.

Little Cayman Museum Little Cayman, Cayman Islands

Images from the “Return to Bloody Bay” and “Grouper Moon” projects are on display at the Little Cayman Museum. Completely renovated and reopened to the public in 2014, the museum includes historical items from the personal collection of museum founder Linton Tibbetts along with curated exhibits preserving the history, people and rich, colorful culture of Little Cayman.

Sunset House Room 407 George Town, Grand Cayman

Sunset House renovated several ocean-front rooms in 2014, creating underwater theme rooms decorated by prominent underwater photographers. Jim Hellemn is very honored to be chosen for this project, among some of the best underwater photographers in the world. Jim’s signature room is decorated with large aluminum prints of Grand Cayman underwater scenes including “Orange Canyon”, “Camana Bay Reef” and “The Feast”.

GALLERIES

Ritz Carlton Gallery

Ritz Carlton, Seven Mile Beach, Grand Cayman

Lee Hayden Gallery

Beachwood Place, Cleveland, Ohio

The Octagon Gallery

Ames, Iowa

AWARDS / PUBLICATIONS

2001	“Portrait of a Coral Reef”, <i>National Geographic Magazine</i>
2009	Nature’s Best Photography - <i>Windland Smith Rice Award</i>
2011	ASMP Best of 2011 - “ <i>Return to Bloody Bay</i> ”
2013	Ocean Geographic Society Pictures of the Year, <i>Wyland Award</i>
2013	2013 Commercial Interior Design Award
2016	“City Panorama” - Seattle

Publications include National Geographic, Ocean Geographic, Sport Diver, Scuba Diving, Diver, Asian Geographic, Nature’s Best Photography, Real Life



Portrait of a Coral Reef

Jim Hellemn

Coral Reef Landscapes

From the Hotspots of Marine Biodiversity

Coral Reef Series

About the prints

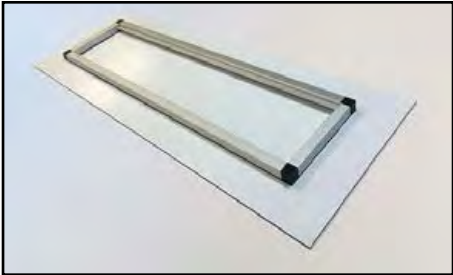
Fine art quality prints on aluminum composite with recessed aluminum frame

Each print is a limited edition - entirely hand-made, hand-signed by the artist. In short, these are the highest quality archival prints that we know how to make, designed to last a lifetime. All prints are Giclées, printed on PET gloss film for the highest imaging quality using wide-gamut archival inks rated for more than 130 year indoor life. The print is mounted on 1/8" thick DiBond Aluminum composite and backed with an elegant satin aluminum square tube frame that is recessed 3-5" inches (depending on the print size), so that the sheet appears to float one inch off the wall.

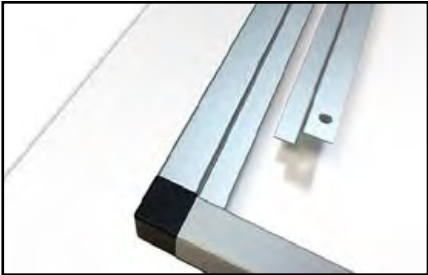
Canvas and Custom Print Types Available by Quote



hand signed by artist



elegant satin aluminum backing frame



easy hanging system

ALUMINUM PRINT STANDARD WIDTHS 48" / 60" / 70" / 80" / 90" / 110"

STRETCHED AND UNSTRETCH CANVAS PRINTA AVAILABLE BY QUOTE

CUSTOM SIZES AND PRINT TYPES AVAILABLE BY QUOTE - most images available in a wide variety of sizes a nd print types

Prints available online at:
www.blueoceanart.com

Please contact us by email for custom quotes at sales@blueoceanart.com.

Coral Reef Collection

6, 8	"Tubbataha Atoll" Tubbataha Atolls World Heritage Site Philippines
9, 10	"South Point 2" Sipadan Island, Malaysia Celebes Sea
12, 14	"Orange Canyon" Grand Cayman Island, British West Indies
15, 16	"Orange Canyon Rays" Grand Cayman Island, British West Indies
18, 20	"Magic Kingdom" Pillar Coral Reef, Cayman Brac, British West Indies
21, 22	"Red Ropes, Black Jacks" Little Cayman Island, British West Indies
24, 26	"Great Wall West" Little Cayman Island, British West Indies
27, 28	"Great Wall East" Little Cayman Island, British West Indies
30, 32	"Bloody Bay Wall" Little Cayman Island, British West Indies
31, 33	"Exploring the Wall" Little Cayman Island, British West Indies
34, 36	"Migration" Sipadan Island, Malaysia Celebes Sea
37, 38	"Barracuda Point" Sipadan Island, Malaysia Celebes Seas
40	"Amos Rock" Tubbataha Atolls World Heritage Site Philippines
41	"Black Rock Sea Fans" Tubbataha Atolls World Heritage Site Philippines
42	"The Grotto" Grand Cayman, British West Indies
43	"Storm" Little Cayman Island, British West Indies
44	"South Point 3" Sipadan Island, Malaysia Celebes Sea
45	"Babylon" East End, Grand Cayman British West Indies
46	"West Chute" Cayman Islands, British West Indies
47	"Clarion Sea" Down-looking coral reef mosaic
48	"Wilderness Wall" Cayman Islands, British West Indies
49	"Tubbataha Reef" Tubbataha Atolls World Heritage Site Philippines
50, 51	"East Chute" Cayman Islands, British West Indies
52, 53	"Sea Fans" Cayman Islands, British West Indies
54, 55	"Bloody Bay" Cayman Islands, British West Indies
56	"Afternoon at Great Wall" Cayman Islands, British West Indies
57	"Coral Anchors 3" Cayman Islands, British West Indies
58, 59	"Apo Island Coral" Apo Island Marine Reserve, Philippines
60	"Camana Bay Reef" Cayman Islands, British West Indies



Coral Reef Collection

Coral Reefs are the most colorful places on Earth, yet we can't easily see them. Even if you are lucky enough to be able to visit one in person, the dim light and ocean water makes it difficult to appreciate the natural beauty in all its glory.

Water appears deep blue because it obscures and filters sunlight - very effectively. Just a few feet of ocean water removes most of the red and yellow light that gives vibrance to our world. Deep down it's blue - just blue. Without artificial light, and lots of it, colors get reduced to their blue content. Blue is bright, reds and yellows are dim. Red and yellow are so dim, in fact, that brilliant crimson red appears black and totally colorless in the deep ocean.

The magic of this collection of images is the reproduction of the true spectacular colors of the reef, made possible through the application of specialized equipment and techniques developed over thirty years of experience imaging underwater. By getting extremely close to the reef, using intense light sources and photographing the reef in a matrix of overlapping images, a landscape view of a coral reef becomes a reality.

Coral Reefs are the most colorful places on the planet.

Jim Hellemn: One-of-a-kind Coral Reef Landscapes



"Tubbataha Atoll" Sulu Sea, Philippines

“Tubbataha Atoll”

Fine Art Print on Aluminum and Canvas



Huge schools of fish surround a pristine reef covered in brightly colored soft corals, anemones and sponges.

Giclée print, UV Gloss finish. Recessed aluminum frame with hanger.

Sizes available 18 X 48 | 22 X 60 | 26 X 70 | 34 X 90 | 40 X 110

“South Point 2”

Fine Art Print on Aluminum and Canvas



There's a lot of action going on in this pristine coral reef on Sipadan Island. Reef fish of every color imaginable make this reef their home.

Giclée print, UV Gloss finish. Recessed aluminum frame with hanger.

Sizes available 18 X 48 | 22 X 60 | 26 X 70 | 34 X 90 | 40 X 110



"South Point 2" Sipadan Island, Malaysia



"Orange Canyon" Grand Cayman

“Orange Canyon”

Fine Art Print on Aluminum and Canvas



Orange Canyon is a popular dive site on Grand Cayman featuring huge orange Elephant Ear Sponges in abundance.

Giclée print, UV Gloss finish. Recessed aluminum frame with hanger.

Sizes available 18 X 48 | 22 X 60 | 26 X 70 | 34 X 90 | 40 X 110

“Orange Canyon Rays”

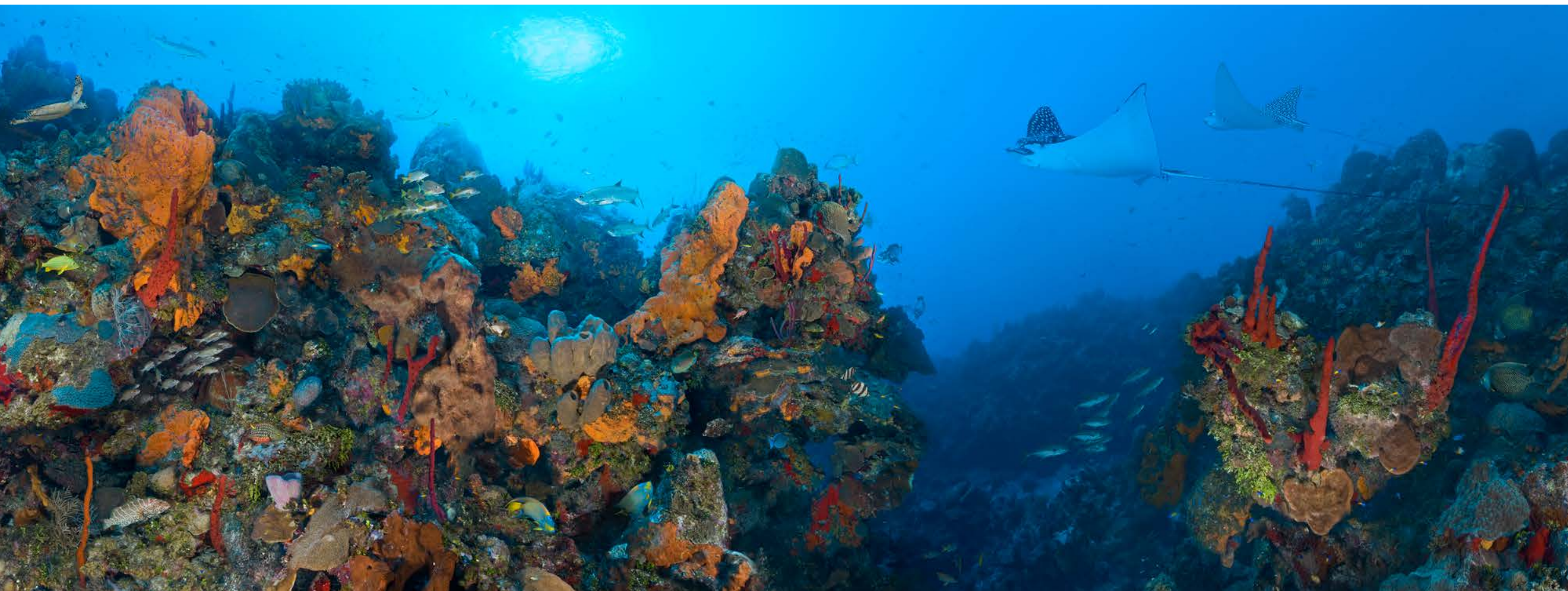
Fine Art Print on Aluminum and Canvas



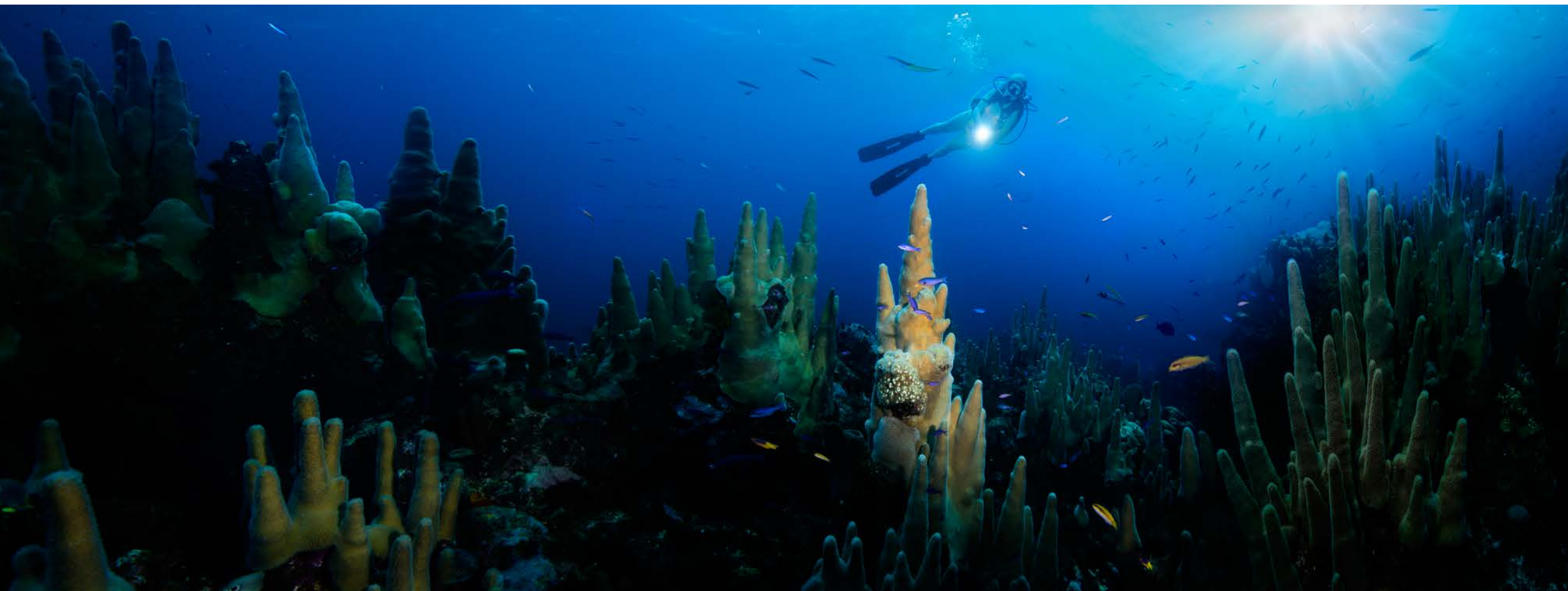
A pair of Spotted Eagle Rays fly effortlessly along the reef walls at Orange Canyon.

Giclée print, UV Gloss finish. Recessed aluminum frame with hanger.

Sizes available 18 X 48 | 22 X 60 | 26 X 70 | 34 X 90 | 40 X 110



"Orange Canyon Rays" Grand Cayman



"Magic Kingdom" Cayman Brac, Cayman Islands

“Magic Kingdom”

Fine Art Print on Aluminum and Canvas



This huge colony of Pillar Coral on the East end of Cayman Brac is by far the largest I have seen in the Cayman Islands. Floating effortlessly past golden spires thrusting upward like magic castles, it's hard not to image yourself in a magical land where anything can happen.

Giclée print, UV Gloss finish. Recessed aluminum frame with hanger.

Sizes available 18 X 48 | 22 X 60 | 26 X 70 | 34 X 90 | 40 X 110

“Red Ropes Black Jacks”

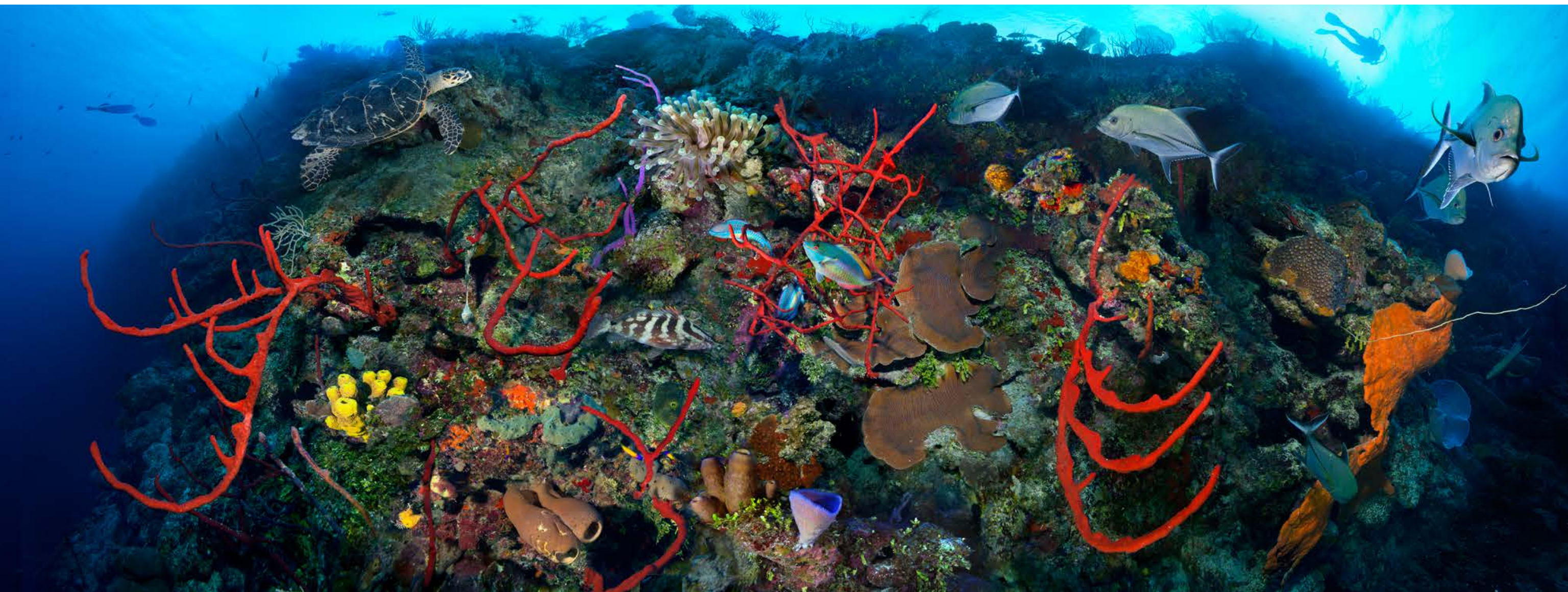
Fine Art Print on Aluminum and Canvas



A variety of intensely colorful marine life clutters the reef walls at Bloody Bay Wall with splotches of bright red, orange yellow, purple, blue, green ... you get the idea..

Giclée print, UV Gloss finish. Recessed aluminum frame with hanger.

Sizes available 18 X 48 | 22 X 60 | 26 X 70 | 34 X 90 | 40 X 110



"Red Ropes, Black Jacks" Little Cayman



"Great Wall West 1999" Little Cayman

“Great Wall West 1999”

Fine Art Print on Aluminum and Canvas



This 1770 Megapixel image of Great Wall West in Bloody Bay Marine Park on Little Cayman Island covers an area 20 ft high X 70 ft wide section of reef in life-size resolution. The image was captured in 300 frames of Fujichrome transparency film.

Giclée print, UV Gloss finish. Recessed aluminum frame with hanger.

Sizes available 14 X 48 | 18 X 60 | 21 X 70 | 27 X 90 | 36 X 119

“Great Wall East”

Fine Art Print on Aluminum and Canvas



One Gigapixel image of Great Wall East in Bloody Bay Marine Park on Little Cayman Island. Incredible detail even at the largest sizes.

Giclée print, UV Gloss finish. Recessed aluminum frame with hanger.

Sizes available 18 X 48 | 32 X 60 | 38 X 70 | 40 X 90 (cropped vertically) | 40 X 110 (cropped vertically)



"Great Wall East" Little Cayman



"Exploring the Wall" Little Cayman

"Bloody Bay Wall" Little Cayman

“Exploring the Wall”

Fine Art Print on Aluminum and Canvas



A diver explores “Great Wall” at Bloody Bay Marine Park off Little Cayman Island.
Giclée print, UV Gloss finish. Recessed aluminum frame with hanger.
Sizes available 16 X 24 | 20 X 30 | 32 X 48 | 40 X 60

“Bloody Bay Wall”

Fine Art Print on Aluminum and Canvas



Scuba Divers explore Bloody Bay Wall in the crystal blue waters off Little Cayman Island.
Giclée print, UV Gloss finish. Recessed aluminum frame with hanger.
Sizes available 16 X 24 | 20 X 30 | 32 X 48 | 40 X 60



"Migration" Sipadan Island, Malaysia

“Barracuda Point” and “Migration”
Fine Art Print on Aluminum and Canvas



Chevron Barracuda hang out at the end of “Barracuda Point” on Sipadan Island, cropped from the left side of the master 240 megapixel “Barracuda Point” image.

The Bumphead wrasse make their way across the reef in “Migration”, cropped from the right side of the master image. Either image may be ordered individually. The master image can be ordered as two images for display together, or a single long image. (see right)

Giclée print, UV Gloss finish. Recessed aluminum frame with hanger.

Sizes available 14 X 48 | 18 X 60 | 21 X 70 | 27 X 90 | 36 X 119

“Barracuda Point” full image
Fine Art Print on Aluminum and Canvas



Chevron Barracuda hang out at the end of “Barracuda Point” on Sipadan Island, as the Bumphead wrasse make their way across the reef. This is master 240 megapixel image cropped vertically for a 3ft X 15ft fine art print on canvas. Custom prints are available on canvas, aluminum and acrylic at sizes up to 5ft X 15ft, depending on substrates and framing choices.

Giclée print, UV Gloss finish. Recessed aluminum frame with hanger.

Sizes available 14 X 48 | 18 X 60 | 21 X 70 | 27 X 90 | 36 X 119



"Barracuda Point" Sipadan Island, Malaysia



“Amos Rock”

Fine Art Print on Aluminum and Canvas



Candy-colored soft corals blend with a large variety of living corals and sponges, with colorful reef fish up close to schooling Big Eye Jacks and White Tip Reef Sharks in the distance in this 200 megapixel image of a coral reef in Tubbataha Marine Park in the Philippines.

Giclée print, UV Gloss finish. Recessed aluminum frame with hanger.
 Sizes available 18 X 48 | 22 X 60 | 26 X 70 | 34 X 90 | 40 X 110



“Black Rock Sea Fans”

Fine Art Print on Aluminum and Canvas



Golden Sea Fans cover the reef walls at this pristine coral reef site in the Tubbataha Reefs Marine Preserve. Sulu Sea, Philippines. This 60 megapixel image was captured in over 30 individual frames combined to create a composite image that shows off the rich colors of the reef.

Giclée print, UV Gloss finish. Recessed aluminum frame with hanger.
 Sizes available 18 X 48 | 22 X 60 | 26 X 70 | 34 X 90 | 40 X 110



“The Grotto”

Fine Art Print on Aluminum and Canvas



A diver explores Devil’s Grotto in Grand Cayman as millions of minnows fill the caves and predator fish feed for weeks..

Giclée print, UV Gloss finish. Recessed aluminum frame with hanger.
 Sizes available 18 X 48 | 22 X 60 | 26 X 70 | 34 X 90 | 40 X 110

“Storm”

Fine Art Print on Aluminum and Canvas



Like an underwater storm, currents on the shallow reef stir up silt., The fine silt lifts like a dense fog and flows over the edge of the wall and down the numerous sand chutes. Minutes later the silt is swept away by the deeper currents and it’s crystal clear again.

Giclée print, UV Gloss finish. Recessed aluminum frame with hanger.
 Sizes available 18 X 48 | 22 X 60 | 26 X 70 | 34 X 90 | 40 X 110



“South Point 3”

Fine Art Print on Aluminum and Canvas



At South Point on Sipadan Island it's hard to photograph a turtle without a turtle getting in the way. Green and Hawksbill Sea Turtles abound in the pristine coral reef environment along with White Tip Reef Sharks, Big Eye Jacks and hundreds of species of coral and reef creatures.

Giclée print, UV Gloss finish. Recessed aluminum frame with hanger.

Sizes available 18 X 48 | 22 X 60 | 26 X 70 | 34 X 90 | 40 X 110



“Babylon”

Fine Art Print on Aluminum and Canvas



Caribbean reef sharks cruise over the bright red vase sponges that decorate the reef walls at “Babylon” on Grand Cayman’s East End.

Giclée print, UV Gloss finish. Recessed aluminum frame with hanger.

Sizes available 18 X 48 | 22 X 60 | 26 X 70 | 34 X 90 | 40 X 110



“West Chute”

Fine Art Print on Aluminum and Canvas

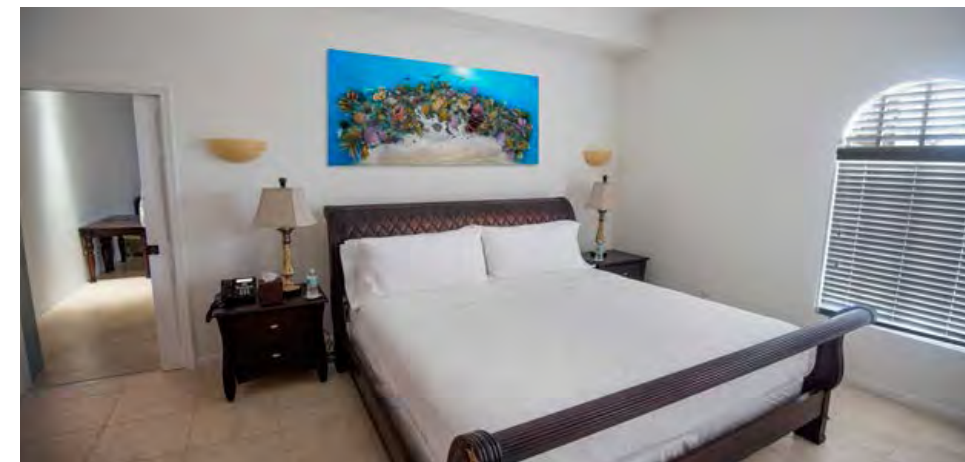


Friendly Nassau Groupers and turtles are constant companions at West Chute on Cayman Brac. Giclée print, UV Gloss finish. Recessed aluminum frame with hanger.
 Sizes available 24 X 48 | 30 X 60 | 35 X 70 | 40 X 80 | 45 X 90



“Clarion Sea”

Fine Art Print on Aluminum and Canvas



This (mostly) down-looking view of a colorful tropical coral reef was the design for a glass tile mosaic for a large private pool. The perspective tilts up to create a horizontal view of the reef along the pool's curved sides.

Giclée print, UV Gloss finish. Recessed aluminum frame with hanger.
 Sizes available 24 X 48 | 30 X 60 | 35 X 70 | 40 X 80 | 45 X 90



“Wilderness Wall”

Fine Art Print on Aluminum and Canvas



The Cayman Islands is famous for its pristine coral reefs, and the incredible visibility and rugged terrain make this site on the South side of Cayman Brac a truly spectacular example.

Giclée print, UV Gloss finish. Recessed aluminum frame with hanger.

Sizes available 24 X 48 | 30 X 60 | 35 X 70 | 40 X 80 | 45 X 90



“Tubbataha Reef”

Fine Art Print on Aluminum and Canvas



A pristine coral reef on the edge of the South Atoll in Tubbataha Marine Park. A Unesco World Heritage site, Tubbataha is known as one of the most biodiverse areas on Earth..

Giclée print, UV Gloss finish. Recessed aluminum frame with hanger.

Sizes available 24 X 48 | 30 X 60 | 35 X 70 | 40 X 80 | 45 X 90

“East Chute”

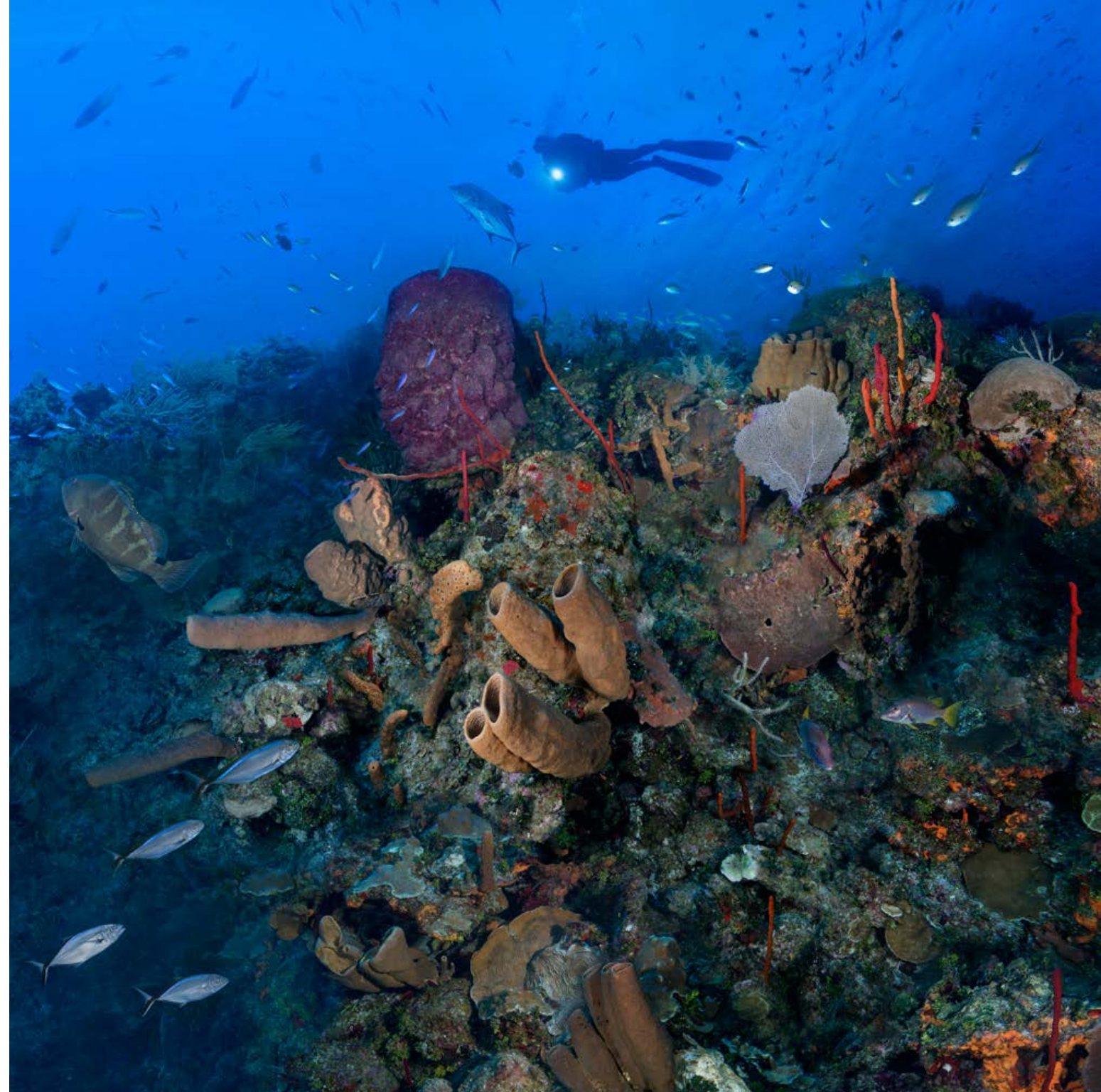
Fine Art Print on Aluminum and Canvas



A scuba diver explores the reef wall near East Chute. This section cropped from the “Coral Anchors” image, documents a large area of a coral reef wall site on the island of Cayman Brac. Even at this cropping, the image is extremely high resolution and suitable for wall-sized reproductions..

Giclée print, UV Gloss finish. Recessed aluminum frame with hanger.

Sizes available “East Chute” 24 X 24 | 36 X 36 | 40 X 40 | 50 X 50 | Custom



“Sea Fans”

Fine Art Print on Aluminum and Canvas



A Queen Angel swims by as Purple Sea Fans sway in the current.
Giclée print, UV Gloss finish. Recessed aluminum frame with hanger.
Sizes available 16 X 24 | 20 X 30 | 32 X 48 | 40 X 60



“Sea Fans” Cayman Brac



"Bloody Bay" Cayman Brac

"Bloody Bay"

Fine Art Print on Aluminum and Canvas



A club-tipped anemone claims the foreground in this view of the reef wall in this wide photograph taken on a quiet afternoon in Bloody Bay Marine Park on Little Cayman Island..

Giclée print, UV Gloss finish. Recessed aluminum frame with hanger.

Sizes available "Bloody Bay" 16 X 24 | 20 X 30 | 32 X 48 | 40 X 60



“Afternoon at Great Wall”
Fine Art Print on Aluminum and Canvas



A Hawksbill Turtle glides by the steep walls at Great Wall West, as busy swarms of reef fish and a Nassau Grouper go about their afternoon chores.

Giclée print, UV Gloss finish. Recessed aluminum frame with hanger.
 Sizes available 18 X 48 | 22 X 60 | 26 X 70 | 34 X 90 | 40 X 110

“Coral Anchors 3”
Fine Art Print on Aluminum and Canvas



Dramatic vertical cropping from the Coral Anchors image features two divers watching a Spotted Eagle Ray feeding in the sand. Below, dug into the reef is the largest of the coral encrusted anchors, for which the site is named. See if you can spot it.

Giclée print, UV Gloss finish. Recessed aluminum frame with hanger.
 Sizes available 18 X 48 | 22 X 60 | 26 X 70 | 34 X 90 | 40 X 110



“Apo Island Coral”
Fine Art Print on Aluminum and Canvas

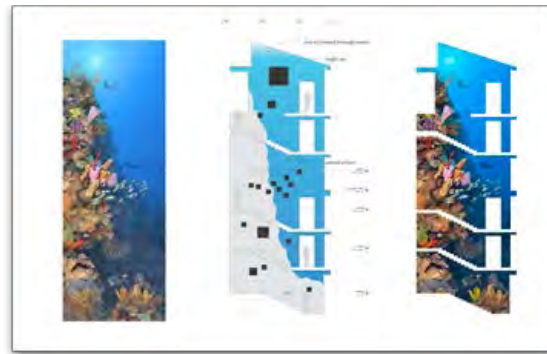


A myriad of corals compete for space in this down-looking mosaic photographed at Apo Island in the Philippines. Over 25 individual images were seamlessly composited together to complete this image. The Philippines is considered by marine researchers to be the center of ocean biodiversity with over 700 species of corals. At Apo Island, it is amazing to see so many species of healthy corals living together on the reef with barely any spot unclaimed.

Giclée print, UV Gloss finish. Recessed aluminum frame with hanger.

Sizes available 24 X 24 | 32 X 32 | 40 X 40





“Camana Bay Reef”
Fine Art Print on Aluminum and Canvas



This image was the design for a 75 ft high coral reef glass tile mosaic created for the Camana Bay Observation Tower in Grand Cayman, where visitors “walk” up a Cayman coral reef wall. The five story high image looks like a photograph, but is actually a finely detailed and very tactile glass tile mosaic. To make the composite image, hundreds of close-up photos were combined to replicate the brilliant colors of the reef, and also match the architecture.

Giclée print, UV Gloss finish. Recessed aluminum frame with hanger.
 Sizes available 18 X 48 | 22 X 60 | 26 X 70 | 34 X 90 | 40 X 110



Prints available online at:
www.blueoceanart.com

Copyright© 2018 Jim Hellemn, all rights reserved worldwide jim@blueoceanart.com

